

Enhancing Logistics Efficiency with **Logifleet360°**

Bohnenblust AG, a family-owned business based in St. Gallen, operates as a specialized transport company, focusing on the transportation of general cargo and steel. Their fleet consists of 20 vehicles and 16 trailers, demanding meticulous management to guarantee seamless operations.

We spoke with Marc Bohnenblust, owner and Geschäftsführer, about how Logifleet's platform, Logifleet360°, has significantly impacted their operational efficiency by securing real-time connectivity between office and field operations.

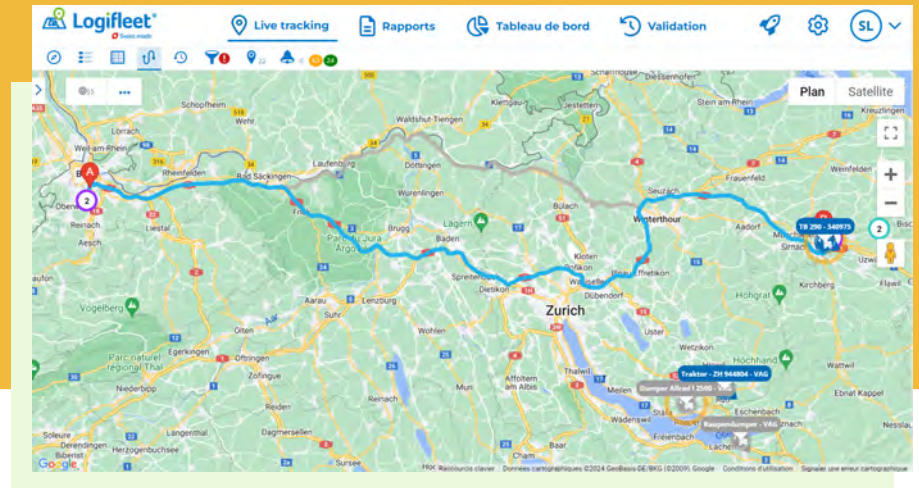


Vehicle Connect



The integration of Vehicle Connect has effectively resolved historical challenges related to uncertain vehicle whereabouts. This improvement has resulted in a more accurate estimation of arrival times for customer deliveries. Moreover, access to data on vehicle running hours and downtime has been pivotal in fine-tuning scheduling and resource allocation strategies within the organization.

The live mapping capabilities within Logifleet360° streamline asset monitoring, allowing for seamless tracking of vehicles in real-time. This feature empowers Bohnenblust's team to efficiently oversee vehicle movements and statuses. In addition to accessing vital vehicle information, encompassing downtime details, route histories, and stops, the team can plan their deliveries meticulously using the route planner.



This allows them to anticipate traffic delays, calculate the distance and kilometers, as well as communicate with customers on arrival times. Needless to say, this significantly enhances operational efficiency, facilitating more precise and efficient logistics management.

Mini Tool Connect



Bohnenblust is one of the first Logifleet customers to use Mini Tool Connect, a versatile solution designed for tracking smaller non-powered equipment.

However, in Bohnenblust's case, they are primarily using Mini Tool Connect to monitor which trailer is attached to which truck. Previously, managing this required extensive manual documentation, but with Mini Tool Connect, everything is now visible on the screen.

This digital system has made tracking trailer-truck connections easier, saving time and eliminating the need for excessive paperwork. The transition to a digital format has streamlined their operations, enhancing efficiency and accuracy in their inventory management



Geozone Feature



The geozone feature within Logifleet's platform offers valuable capabilities to mark key locations on the map. This functionality significantly enhances the ability to monitor and track activities occurring within these defined zones.

By precisely outlining these areas, Bohnenblust has gained a comprehensive understanding of their operational engagements with specific customers or critical facilities.

This feature isn't solely about marking locations; it also serves as a tool for precise calculation and analysis. It enables the measurement of involvement and interaction within these designated areas. This nuanced insight allows gauging the extent of service delivery, the frequency of visits, and the duration of engagements. As a result, actionable data is generated, aiding in refining service strategies and improving customer experiences.



User-Friendly Interface & Support Excellence



Marc Bohnenblust particularly appreciates the user-friendly interface of Logifleet360°, which incorporates a diverse range of symbols and colors. He mentioned, "This variety allows for quick identification of assets on the live map. The thoughtful design enables efficient differentiation between vehicles, trailers, and key points of interest for Bohnenblust AG. This intuitive interface has streamlined our monitoring process, providing a clear visual representation of our fleet's movements in real-time. Accessing critical information has been seamless, aiding our decision-making processes."

Logifleet's customer service has demonstrated exceptional responsiveness and understanding of specific needs at Bohnenblust AG. The team exhibits friendliness and consistently offers valuable assistance whenever required. Their availability and proactive approach in addressing operational queries have been instrumental. This level of support has significantly contributed to the smooth functioning of Marc's day-to-day operations.



In Conclusion

Marc Bohnenblust shared his satisfaction with Logifleet, mentioning, 'Logifleet360° has played an important role as a partner, understanding our distinct needs and assisting our pursuit of operational excellence. The innovative solutions provided have notably enhanced our capacities, enabling us to deliver outstanding service while optimizing our operations. We confidently recommend Logifleet to any enterprise seeking to improve their fleet management.'

Burgstrasse 12
CH-9000 St. Gallen
T +41 71 277 52 47

En Budron H9
CH-1052 Le Mont s / Lausanne
T +41 21 651 06 51

